



Specifications

Operating range:
50-3,000 PSI (4-207 bar)

Maximum flow:
30 GPM (114 LPM)

Ports:
3/4" - 16 (1/2 SAE #8)
straight threads,
o-ring ports

Mounting:
In-line with 1/4"
mounting holes

Weight:
5.5 lbs (2.2 kg)

Finish:
Unpainted

Part Number:
700052

Available:
Now

Country of Manufacture:
USA

HEAVY DUTY DEPTH CONTROL VALVE

700052-HD DCV Valve Assembly



Front View



Back View

FEATURES

High-strength ductile iron casting

Precision ground chrome-plated
spools

Wiper seals

Buna-N seals

Spring dampened spool and
check valve

BENEFITS

- Long life and resistance to
shock loads

- Low leakage, long life and
repeatability of depth control

- Keeps dirt out of the valve body

- Wear and abrasion resistant for
long life

- Smooth flow from open to close

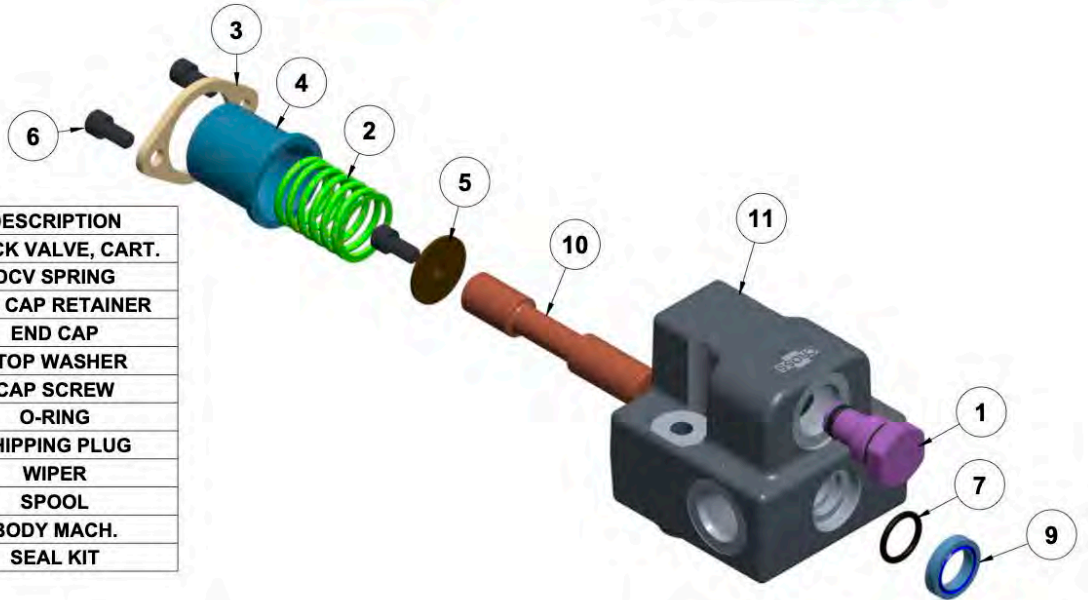
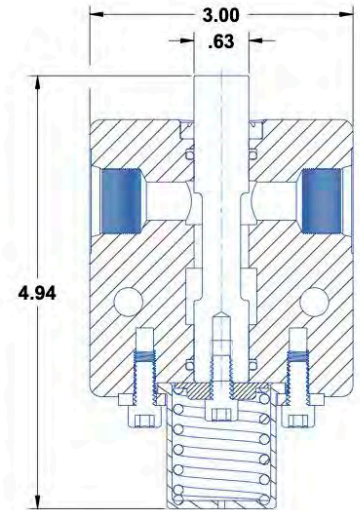
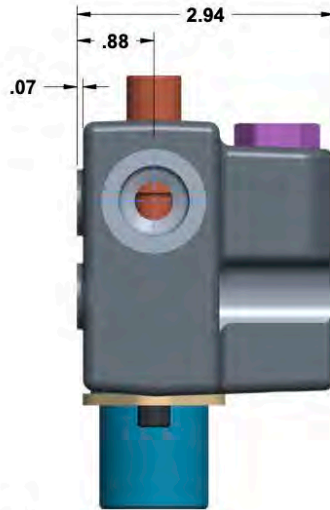
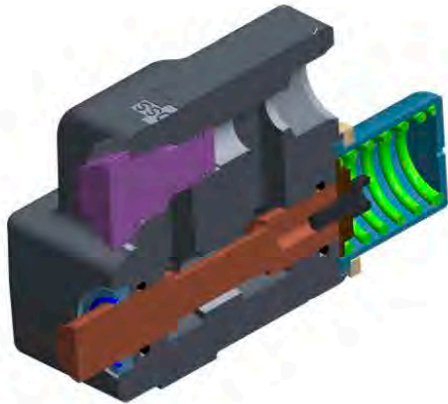
Applications

This valve will limit the movement or travel of an implement, boom, or other hydraulically-operated device. When the desired travel is reached, the spool is depressed to shut off the flow of fluid to the cylinder or motor. Reverse flow passes through a low leakage built in check valve. Built to withstand severe duty applications. Used in a system with up to 30 GPM flow.



HEAVY DUTY DEPTH CONTROL VALVE

700052-HD DCV Valve Assembly



ITEM	PART#	QTY	DESCRIPTION
1	1A9435	1	CHECK VALVE, CART.
2	1A9456	1	DCV SPRING
3	1V2708	1	END CAP RETAINER
4	1V2709	1	END CAP
5	1V2710	1	STOP WASHER
6	2A0079-404N	3	CAP SCREW
7	2A0283-7114	2	O-RING
8	2A0353-12	3	SHIPPING PLUG
9	2A0773-510	1	WIPER
10	N/A	1	SPOOL
11	N/A	1	BODY MACH.
12	2V0114	0	SEAL KIT

Made in America. Serving the World.

Cross Manufacturing, Inc. Lewis, KS 67552 Phone: 913-433-7777